

Primary Six Parent Engagement Session 2022

Time	Programme	Remarks
3.30 p.m.	Address by School Principal	School Focus 2021
3.45 p.m.	Year Head Time	PSLE & DSA Key Programmes
4.00 p.m.	Sharing by EL, Math, Sci & MT HODs	Level Focus Key strategies to support your child Assessment format
4.30 p.m.	Form Teachers' time	Expectations & routines Cyberwellness Growth Mindset in school and at home

Principal's Address

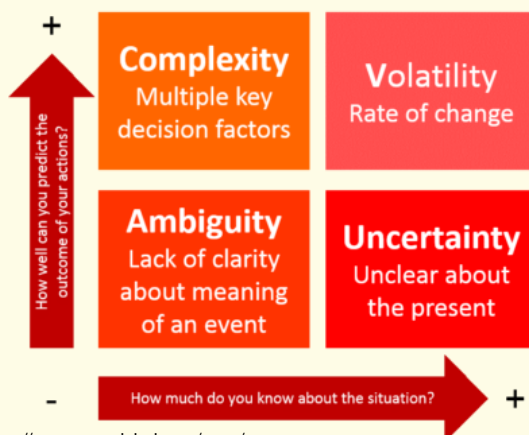
Understanding the
new education
landscape and
Sengkang
Green's focus



Source: freepik.com

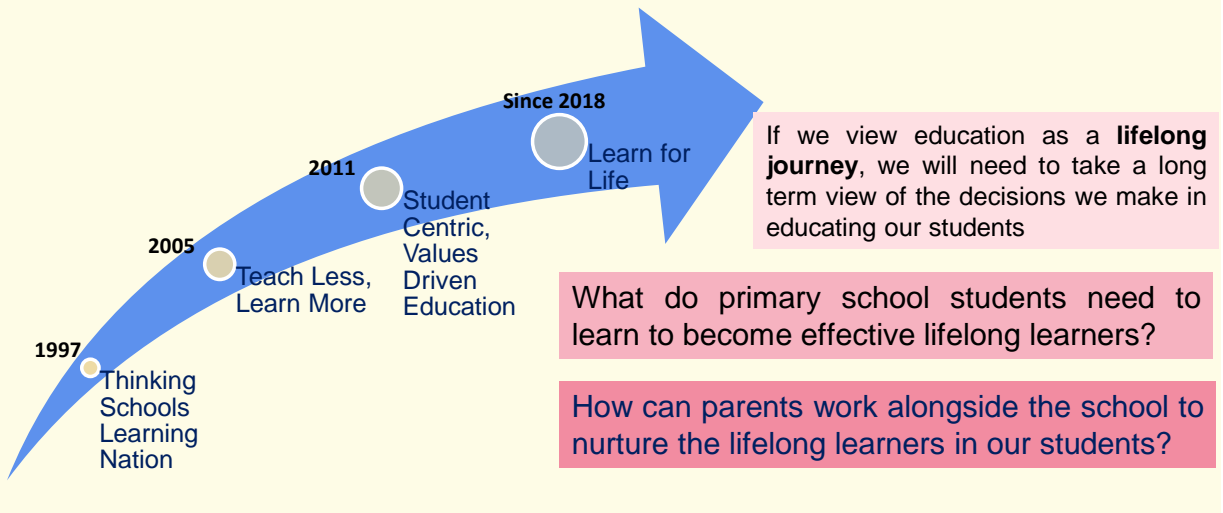
Education Shifts – an update

The VUCA World

Source: <https://www.cee-global.com/vuca/>

The Covid-19 Pandemic provides a good example of the VUCA world that our students will need to continue to navigate now and in the future.

Our Education System



Goals of Education

A Vibrant and Cohesive Singapore

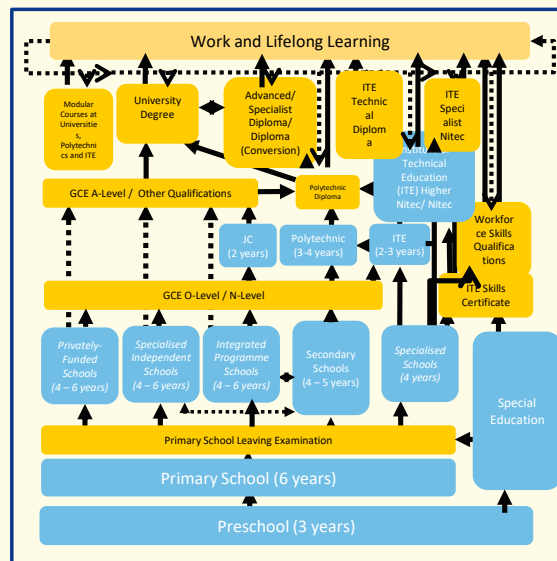
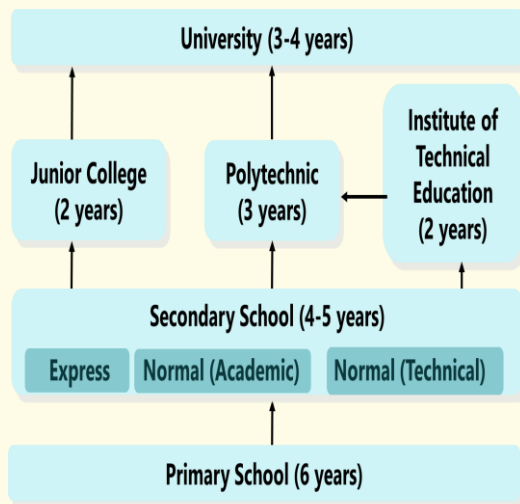
1. Nurture the child

- Maximise our children's potential
- Provide multiple pathways to success
- Offer values-based education
- Instill in them a sense of belonging, reality and hope – with a will to act

2. Develop the citizen

- People are Singapore's only "natural resource"
- Education prepares our children for their role in an increasingly uncertain and globalised world

Evolution of our Education Landscape



7

‘Learn for Life’

New phase of our education system

- Develop diverse strengths and interests of our students,
- Nurture an intrinsic motivation to learn
- Ensure every child has a good start in life, and can access opportunities at every stage of their lives

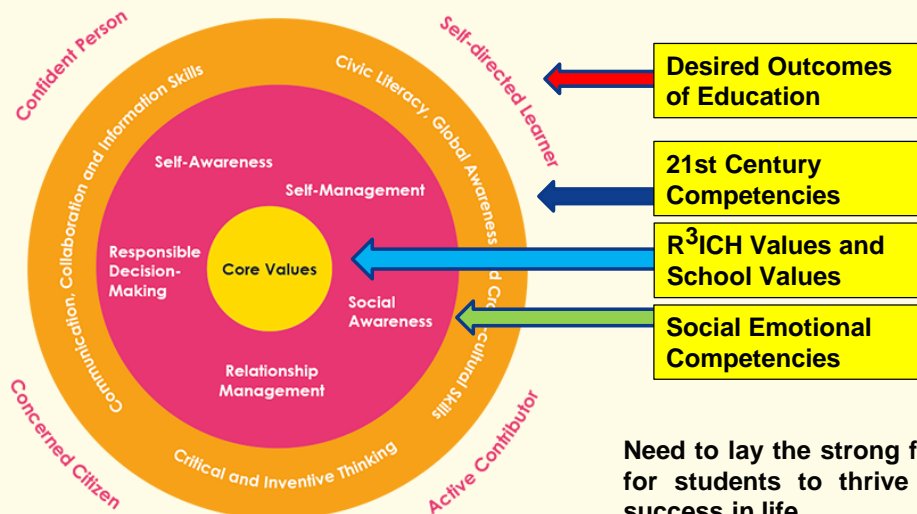
Refreshing our Curriculum for the Future

- **Digital Literacy**
 - Prepare students to thrive in a digital and tech-driven future
- **Blended Learning**
 - Accelerate learning through digital tools by COVID-19
- **Character and Citizenship Education**
 - Equip students with strong sense of values, resilience and skills
- **Knowing Asia**
 - Seize economic opportunities in Asia
 - Enhance support for language learning

9

21 Century Competencies

Essential Learning in students that guides our design of learning



Our school themes have been carefully selected to develop the character in each SKGian, guided by the school's vision, mission and values



Refer to Principal's message on school website



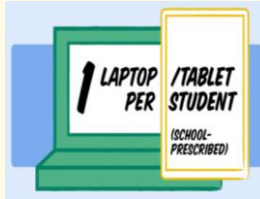
Refreshing our Curriculum for the Future

- **Digital Literacy**
 - Prepare students to thrive in a digital and tech-driven future
- **Blended Learning**
 - Accelerate learning through digital tools by COVID-19
- **Character and Citizenship Education**
 - Equip students with strong sense of values, resilience and skills
- **Knowing Asia**
 - Seize economic opportunities in Asia
 - Enhance support for language learning

Strengthening Digital Literacy



- Enhanced cyber wellness education



- Introduce personal learning devices (PLDs) to all Secondary students by 2021



- More schools to offer O-Level and A-Level Computing
- Deepen computational thinking through Mathematics curriculum

13

Integrate Blended Learning as integral feature of curriculum

Complementing school experience with Home-Based Learning (HBL)

- Encourage more self-directed, independent and intrinsically motivated learners
- Dedicated time and space to explore interests and learn outside the curriculum
- There are days in the school calendar which caters for different levels to do e-learning

14

Refreshing our Curriculum for the Future

- **Digital Literacy**
 - Prepare students to thrive in a digital and tech-driven future
- **Blended Learning**
 - Accelerate learning through digital tools by COVID-19
- **Character and Citizenship Education**
 - Equip students with strong sense of values, ~~resilience~~ and skills
- **Knowing Asia**
 - Seize economic opportunities in Asia
 - Enhance support for language learning

15

REFRESHING OUR CURRICULUM FOR THE FUTURE

Refreshing our Curriculum – Knowing Asia

- Enhance the humanities curriculum for a deeper understanding of Asia, including ASEAN
- More opportunities for conversational language learning twinned with ASEAN trips, starting with Thai and Vietnamese

16

YEAR HEAD TIME

- ✓ KEY PROGRAMMES
- ✓ PSLE
- ✓ DSA

Supporting Your Child's Learning for the Final Year of Primary Education



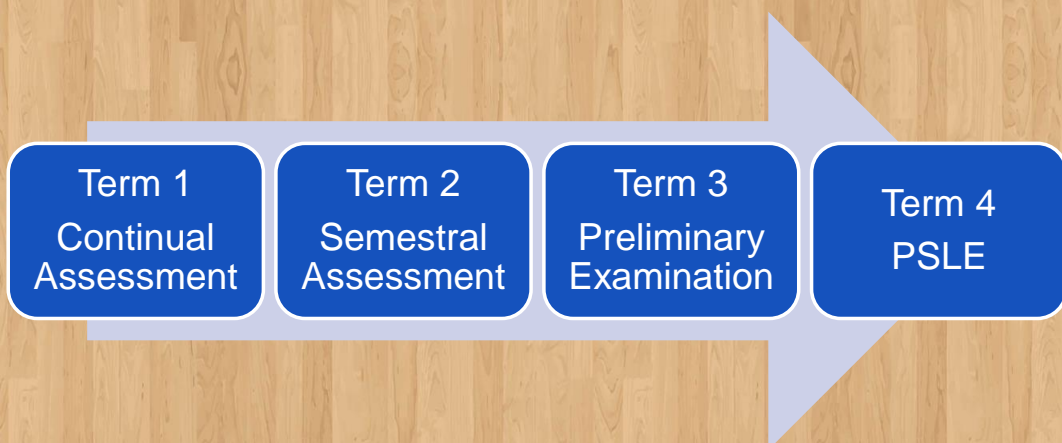
Challenges common to P6 Students

- **Higher academic demands** along with cognitive development (content coverage, conceptual understanding, length of exam papers & questions of higher order thinking)
- Personal **physiological changes**
- **Relationship with peers**

Students need to:

- Stay **confident** in the face of challenges
- Be disciplined and stay focused over a longer time span
- **Have social emotional competencies to deal with the challenges**

Route Map of Assessment for P6 (2022)



School Assessment Dates (2022)

Continual Assessment (CA)	Date
English Language /Foundation English Paper 2	24 February
Mathematics /Foundation Mathematics	25 February
Science/Foundation Science	28 February
Mother Tongue Language /Foundation Mother Tongue Paper 2	1 March
Higher Mother Tongue Paper 2	2 March

School Assessment Dates (2022)

Semestral Assessment (SA)	Date
EL/FEL Oral Examination	21 April
MT/FMT Oral Examination	21 April
EL/FEL Listening Comprehension & EL/FEL Paper 1	9 May
MTL/FMT Listening Comprehension & MTL Paper 1	10 May
EL /FEL Paper 2	11 May
Mathematics /Foundation Mathematics	12 May
MTL/FMT Paper 2	13 May
Science/Foundation Science	18 May
Higher Mother Tongue Paper 1 and 2	19 May

School Assessment Dates (2022)

Preliminary Examination	Date
EL/FEL/MTL/FMT Oral Examination – Day 1 EL/FEL/MTL/FMT Oral Examination – Day 2	21 & 22 July
EL/FEL/MTL/FMT Listening Comprehension	16 August
EL/FEL Paper 1 & 2	18 August
Mathematics /Foundation Mathematics	19 August
MT Paper 1 and 2 FMT Paper 2	22 August
Science/Foundation Science	23 August
Higher Mother Tongue Paper 1 and 2	24 August

PSLE Dates

Activity	Date / Period
PSLE Oral	11 & 12 August
PSLE Listening Comprehension	16 September
EL/FEL Paper 1 and 2	29 September
Mathematics /Foundation Mathematics	30 September
MT Paper 1 & MT/FMT Paper 2	3 October
Science/Foundation Science	4 October
Higher Mother Tongue Paper 1 & 2	5 October

<https://www.seab.gov.sg/home/examinations/psle>

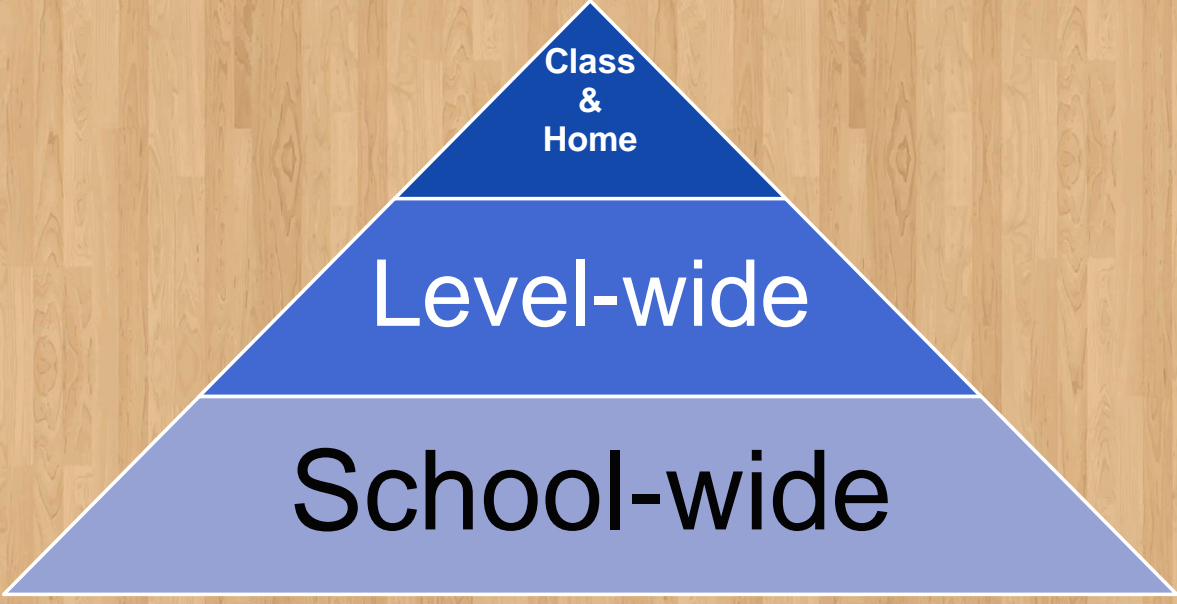
Post PSLE Dates

Event	Date / Period
PSLE Marking	17 October – 20 October
Release of PSLE results	21 November – 25 November *
Secondary 1 Posting Exercise	5 working days after the Release of PSLE Results
Release of Secondary School Posting Results	19 December – 23 December *
Report to Secondary School	Refer to latest updates on MOE / SEAB website / PG

<https://www.seab.gov.sg/home/examinations/psle>

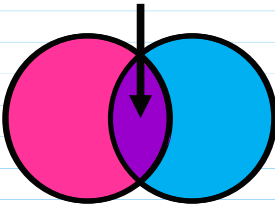
* To be confirmed

Strategies to support your child



School-wide Strategies

Our Common interest : **your child, our student**



We believe in **working collaboratively** to develop our students **holistically**.
Let us **support one another jointly** as we **support our students** in their PSLE preparation.

School-wide Strategies

Regular Communication with parents

Student Handbook, School Calendar, Parent Gateway, Letters of notification & School Website

Parent Engagement Sessions

Sessions	DATE/PERIOD
P6 Parent Engagement Session	21 Jan 2022
Parent-Teacher-Child Conference (For selected students)	10 Mar 2022
Parent-Teacher-Child Conference (For all students)	26 & 27 May 2022
Meeting parents of selected students	Adhoc

School-wide Strategies

Social Emotional Learning (SEL)

Numerous researches & newspaper articles have stated that students' school holistic achievements are closely related to social emotional competencies.

How the "Big 5" in Social Emotional Learning Impact Life Outcomes

August 2018

...the teaching of social and emotional skills throughout a child's school career...not only impact their lives in the short term, including **ability to respond in a healthy manner to difficult life situations or stress**, but will also play a large role in their success later in life.

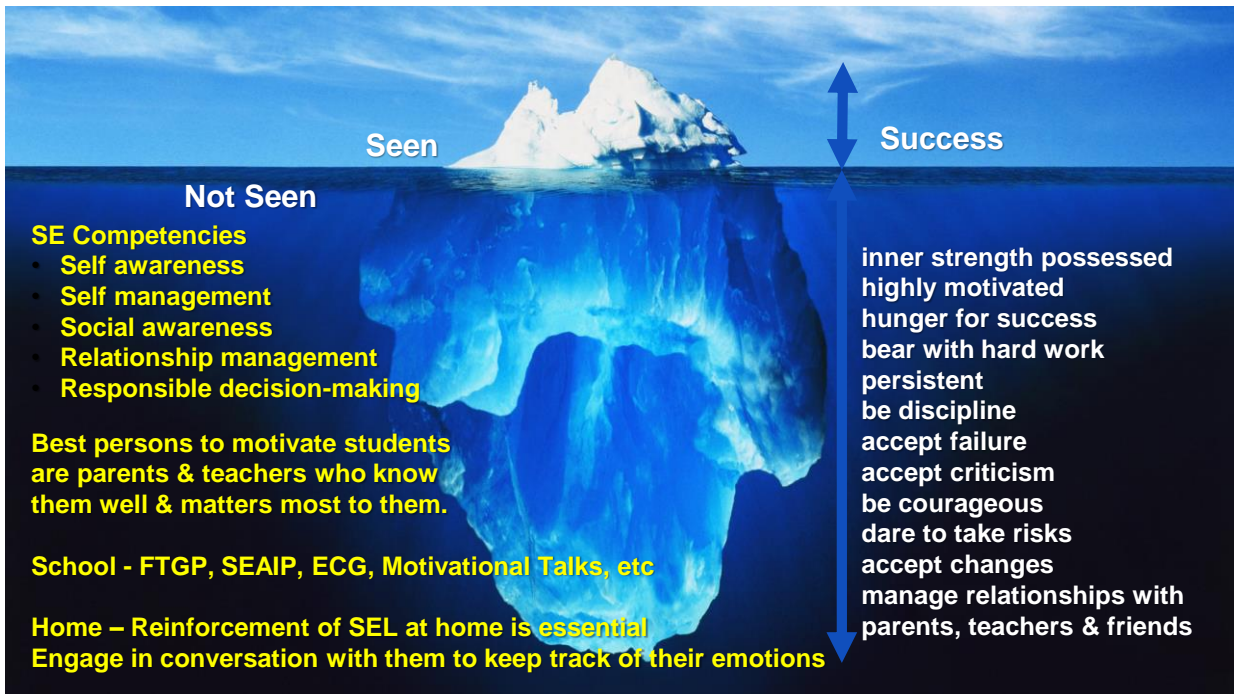
<https://learnwelleducation.com/how-the-big-5-in-social-emotional-learning-impact-life-outcomes/>

School-wide Strategies

The Future of Education Depends on Social Emotional Learning: Here's Why

June 2018

".... social and emotional learning (SEL) is critical to a child's development, as it directly correlates to **success and happiness as an adult**...Combining...with academic development creates high-quality learning experiences and environments that **empower students to be more effective contributors** in their classrooms today and **in their workplaces and communities tomorrow**" <https://www.edsurge.com/news/2018-06-04-the-future-of-education-depends-on-social-emotional-learning-here-s-why>



Social Skills (Primary 6)

Self-management skills

Relationship

Learning

Social Skills (Primary 6)

Organise Task & Time

- Break down big tasks into smaller ones
- Prepare timeline
- Prioritise

Complete Work Well

- Listen to instructions
- Begin their work without delay
- Stay focus
- Ignore distractions

Improve & Reflect

- Think about the situation
- Consider if their behaviour is appropriate
- Identify other behaviours that will be more helpful for the situation
- Act appropriately

School/Level-wide Strategies



Target Setting

- Guide students in setting targets for all subjects
- Help students set direction and focus to **realise their academic potential to the fullest**
- Teachers will work with the students to set realistic targets
- Targets are not meant to stress the students but to **keep them focus**

School/Level-wide Strategies

Education Career Guidance (ECG)

Education and Career Guidance (ECG) is about equipping students with the necessary **knowledge**, **skills** and **values** to make informed decisions at each key education stage for **successful transition** from school to work, and hence to manage their career pathways and **lifelong learning** throughout their lives.



Parents are encouraged to explore the MySkillsFuture portal with your child at the following link: <https://www.myskillsfuture.gov.sg/content/student/en/primary.html>



School/Level-wide Strategies

PROVIDING EMOTIONAL SUPPORT & BOOSTING CONFIDENCE

Emotional Support by Care Team

- Form Teachers
- Subject Teachers
- School-based Counsellors
- Student Development Team (inclusive of YH & SLs)

Motivational Talks

- School Leaders
- HODs
- YH

Notes of Encouragement from peers

Level/Class Strategies

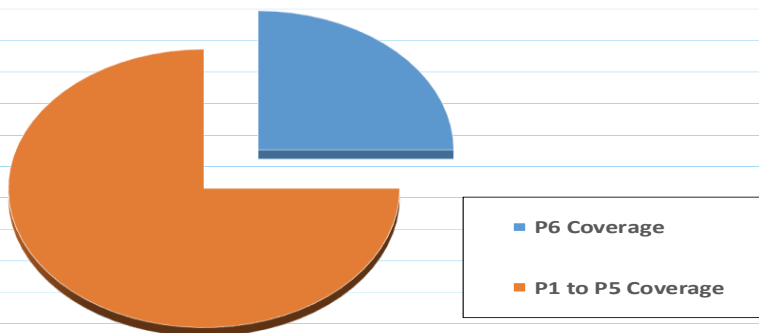
PROVIDING EMOTIONAL SUPPORT & BOOSTING CONFIDENCE

1. Develop a **Growth Mindset**
2. Develop **self-management skills**
 - Complete homework
 - Have an after-school study plan
 - Independent learning
 - Holistic well-being at home



Level/Class Strategies

P6 topic coverage is a small fraction of the total marks allocated in the examinations



Level/Class Strategies

Targeted revision programme
Strengthen understanding of concepts, skills and strategies

Programme	Timeline
Revision Programme	Starting from T1 Week 3
	Term 3 till PSLE

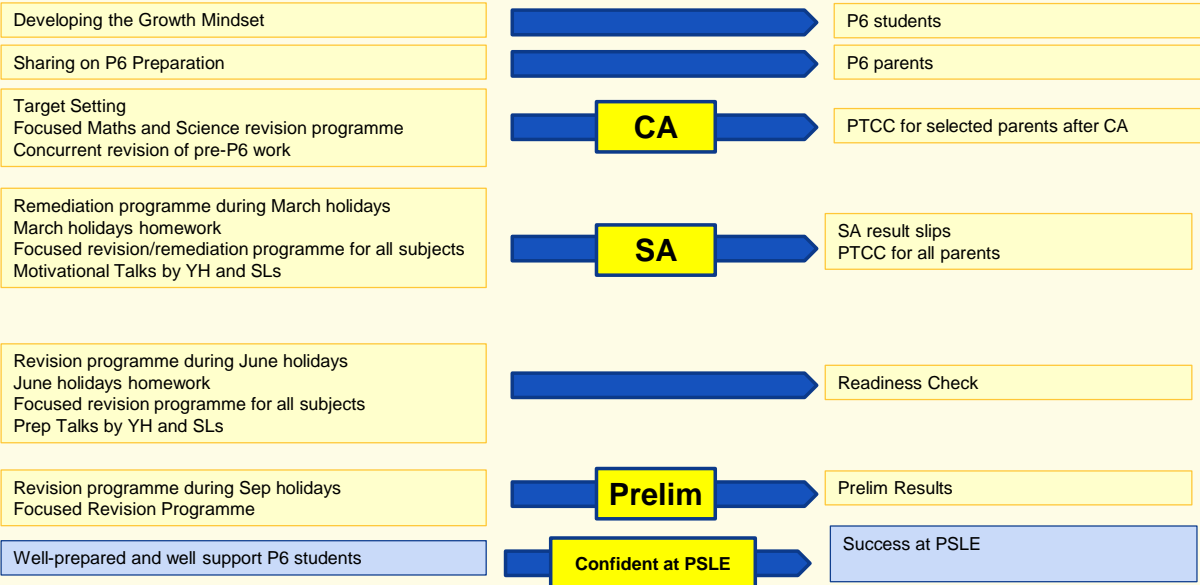
Level/Class Strategies

Remediation Programme during the school holiday

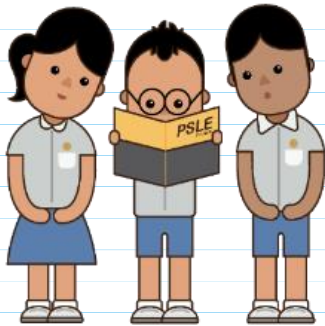
School holidays	Date
March Holidays	14 & 15 Mar 2022
June holidays	20 – 24 June 2022
September Holidays	8 & 9 Sep 2022

All P6 students are involved.
A schedule will be given nearer to date.

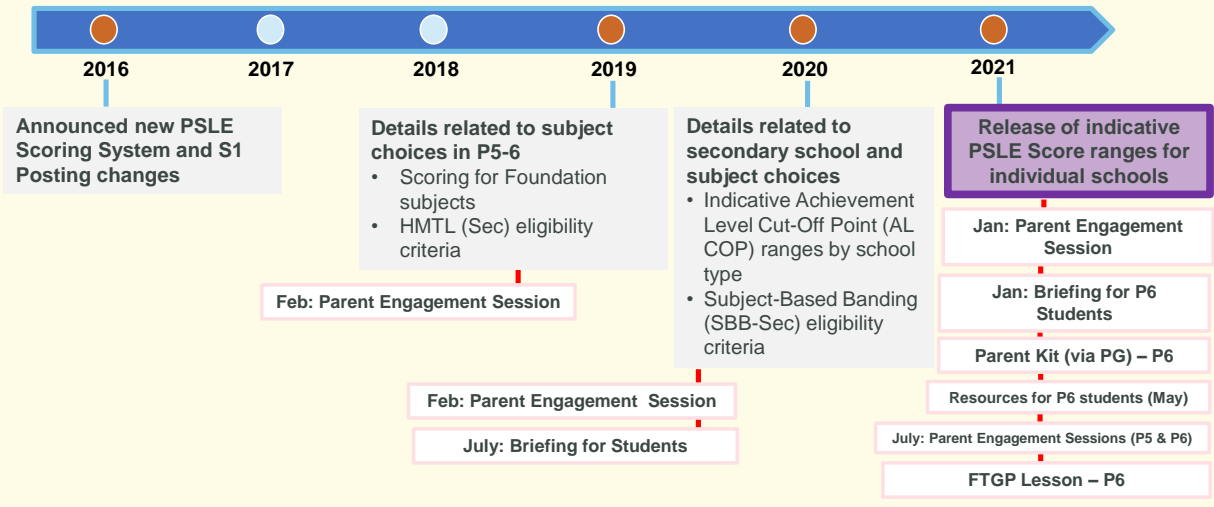
Preparation for PSLE – Strategy Map



***The PSLE is not the destination.
It is part of our children’s education
journey.***



FAMILIARISING STUDENTS AND PARENTS WITH THE SYSTEM AND GUIDING THEM IN MAKING INFORMED SUBJECT & SCHOOL CHOICES



Recap

SCORING BANDS – STANDARD LEVEL SUBJECTS

AL	RAW MARK RANGE
1	≥ 90
2	85 – 89
3	80 – 84
4	75 – 79
5	65 – 74
6	45 – 64
7	20 – 44
8	< 20

Recap

SCORING BANDS - FOUNDATION LEVEL SUBJECT

- Foundation subject grades will also be graded in scoring bands from AL A to C.
- For the purpose of S1 Posting, AL A to AL C for Foundation level subjects will be **mapped to AL 6 to AL 8 of Standard level subjects respectively**, to derive a student's overall PSLE Score.

FOUNDATION LEVEL AL	FOUNDATION RAW MARK RANGE	EQUIVALENT STANDARD LEVEL AL
A	75 – 100	6
B	30 – 74	7
C	< 30	8

45

Recap

4 SUBJECT ALs WILL BE ADDED TO FORM THE OVERALL PSLE SCORE

- The PSLE Score can range from 4 – 32, with 4 being the best.
- Students will be placed in secondary school courses based on their PSLE Score – Express, Normal (Academic) or Normal (Technical).



ENGLISH LANGUAGE	AL 3
MOTHER TONGUE LANGUAGE	AL 2
MATHEMATICS	AL 1
SCIENCE	AL 2
PSLE SCORE: 8	

PLACEMENT OUTCOME	PSLE SCORE
EXPRESS	4 – 20
EXPRESS / N(A) OPTION	21 – 22
N(A)	23 – 24
N(A) / N(T) OPTION	25
N(T)	26 – 30, with AL 7 or better in both EL and MA

As announced in COS 2019, the Express, N(A) and N(T) courses will be phased out by 2024.

46

Recap

SUBJECT-BASED BANDING (SECONDARY) [SBB (SEC)] ELIGIBILITY CRITERIA

- SBB (Sec) provides students posted to the N(A) and (NT) courses with **greater flexibility** to take various subjects at a more demanding level based on their subject-specific strengths and aptitudes.
- Under the new PSLE Scoring System, the SBB (Sec) eligibility criteria is as follows:

FOR STUDENTS OFFERED THE N(A) OR N(T) COURSE	
PSLE SUBJECT GRADE	OPTION TO TAKE SUBJECT AT
AL 5 or better in a Standard level subject	Express level
AL 6 or better in a Standard level subject OR AL A in a Foundation level subject	N(A) level

- As students progress in secondary school, they will continue to have more opportunities to take subjects at more demanding levels based on their performance in school.

47

Eligibility for Higher Mother Tongue Language (HMTL) in Secondary Schools



Criteria Under The New Scoring System

PSLE Score of 8 or better

OR

PSLE Score of 9 to 14 inclusive; and achieving

- i) AL 1/AL 2 in MTL or
- ii) Distinction/Merit in HMTL

48

Progression to Secondary Schools

Choices for
P6 Students

Sec 1 Posting Exercise

Direct Schools Admission –
Secondary Exercise

CONSIDERATIONS FOR CHOOSING A SECONDARY SCHOOL

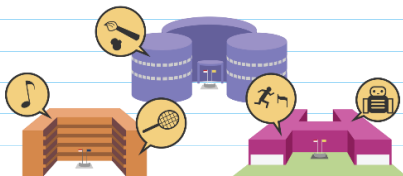
When making school choices in order to find a school that
would help the child learn and thrive best:

CONSIDER



YOUR CHILD'S LEARNING NEEDS

AND



WHAT SCHOOLS CAN OFFER

Direct School Admission (DSA-SEC) Promotes Holistic Education

Allows students to gain **direct** entry to certain secondary schools based on their **talent** in **sports, CCAs and specific academic areas**



Allow **participating secondary schools** to **select some P6 students** for admission to Secondary 1 based on :

- **talents**
- **potential**
- **achievement**

Direct School Admission (DSA-SEC)

- Introduced by the Ministry of Education in 2004
- Seeks to promote holistic education and provide students an opportunity to demonstrate a more diverse range of achievements and talents in seeking admission to a secondary school
- An admission exercise to allow participating secondary schools to select some Primary Six (P6) students for admission to Secondary One.
- The selection will be based on their achievements and talents before the PSLE results are released.
- Takes place from May to Nov (tentative) each year

Direct School Admission (DSA-SEC)

Categories

- Entrepreneurship and Innovation
- Language and Humanities
- Leadership and Uniformed Groups
- Performing Arts
- Science, Technology, Engineering and Mathematics
- Sports and Games
- Visual Arts, Design and Media

Centralised DSA-SEC Application Portal

- Applications via a common online portal using one of the parents' Singpass login.
- Applicants only need to **fill in one online form** to apply to multiple schools.
- Students interested to apply to Singapore School of the Arts (SOTA) or Singapore Sports School (SSP) will continue to apply directly to the schools because of their unique admission requirements.
- Details such as student's Primary 5 and Primary 6 academic results, Co-curricular Activities (CCA), school-based achievements/awards will be **automatically shared** with the schools that the student applies to.

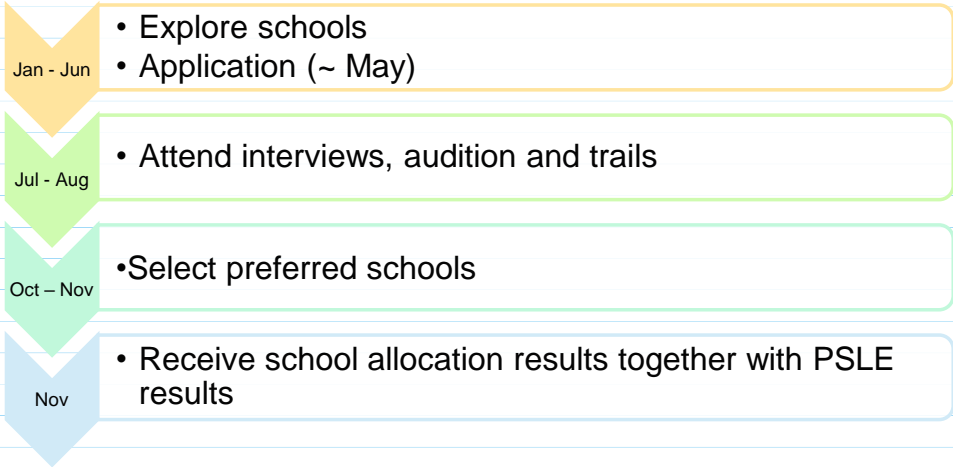
The school does not issue testimonials for DSA applications / admissions to secondary schools/appeals for secondary school transfer

Direct School Admission (DSA-SEC)

Type of Secondary School	% of Places offered
Specialised schools such as Singapore School of the Arts (SOTA) and Singapore Sports School (SSP)	100%
All other Secondary Schools (for non-Integrated Programmes)	20%

Direct School Admission (DSA)

Tentative Time Frame



Direct School Admission (DSA)

Important Things to Note

- Student's PSLE score still matters. Students offered placement in a DSA-Sec school still need a PSLE score that qualifies them for the course offered by the school.
- Successful DSA candidates will **not** be allowed to make any **school option** in the centralised S1 Posting Exercise.
- Unsuccessful DSA candidates will have to participate the S1-Sec Posting Exercise after receiving their PSLE results.

You may find more about the DSA-SEC at the following link:

<https://www.moe.gov.sg/secondary/dsa>

Criteria for selection

- Schools have different selection processes but, in general, applicants must be able to demonstrate their talent, potential, passion and character through their school track record and online DSA applications. For example:
 - Represented the school in a CCA.
 - Held a role in a play or performance.
 - Done well in a subject such as mathematics or creative writing.
 - Held a leadership role in class or a CCA.

Choosing a school

- **Programmes and activities** - Shortlist schools that offer the programmes and activities your child is talented in.
- **Academics**- Students accepted through DSA-Sec still need to qualify for a course offered by that school.
- **School Type** – Culture and
- **Location and transportation**
- **Special needs**- If your child has special needs, for example, hearing loss, visual impairment, physical disability or mild special educational needs, choose a school with specialised facilities or resources that can support them.

Support provided by SKGPS

- Dissemination of information on DSA, Talent Academy, Open House, etc.
- Development mainly through the CCAs and other programmes such as C³ Programme, Bicultural Bridge Programme, PERBAYA, Art Mentorship, etc)
- Building of portfolios
- Students under FAS may seek financial assistance from school for application fees or administration fees required for DSA selection test, trials or camps.

Direct School Admission (DSA)

Outcomes of DSA Application

- DSA Schools will inform applicants of application outcome:
 - Confirmed Offer
 - Waiting List
 - Unsuccessful
- Successful applicants will exercise their preference.

Direct School Admission (DSA)

Important Things to Note

- Your child's PSLE score still matters. Students offered placement in a DSA-Sec school still need a PSLE score that qualifies them for the course offered by the school.
- Successful DSA candidates will **not** be allowed to make any **school option** in the centralised S1 Posting Exercise.
- Unsuccessful DSA candidates will have to participate the S1-Sec Posting Exercise after receiving their PSLE results.

Information on the 2022 DSA-Sec will be available from April 2022.