

Important Information for P6 Parents

March 2020



SENGKANG **GREEN**
Primary School

A vibrant school with a culture of care and the spirit of excellence

Supporting your child's learning for the final year of primary education



What matters

- Importance of School Theme 2020
- Route Map of 2020 P6 Assessment
- Strategies to support your child
- Progression to Secondary School
- Challenges common to P6 Students & Cyberwellness
- Strategies to support your child at home

Importance of School Theme 2020

School Theme 2020

“ Be the best that I can be”

Why the
school theme –
“Be the best
that I can be”?

- To augment the school's effort in the **character development** of our students.



The inaugural Mid-Autumn Festival promotes the values of unity and family bonding

Why the
school theme –
“Be the best
that I can be”

- It stems from the emphasis on **Social Emotional Learning** and seeks to develop greater **self-awareness** and **self-management** in students as these two competencies are key determinants for the holistic development of students and their future success in life.



Success after many months of self-discipline and hardwork

Why the
school theme –
“Be the best
that I can be”

- It recognizes that each child is unique and challenges each student to improve to become a better learner each day so that he/she is **ready to serve** and **ready for the future**.



P6 students at the release of PSLE results 2019

Why the
school theme –
“Be the best
that I can be”

- Our students will be encouraged to personify **the spirit of excellence** in our school vision and they will commit to do their best in every endeavour and becoming better becomes a second nature.



Sharing the joy of success at the release of PSLE results 2019

Why the
school theme –
“Be the best
that I can be”

- Students become conscious to exemplify and practise our **ICAR²E** values.



Prefect Leaders promoting the value of care through acts of thoughtfulness

The school theme – “Be the best that I can be”

The school theme is not about encouraging our students to focus on only self-interest and take a non-collaborative approach to learning with others. On the contrary, it guides our students to become **more socially aware** and adept at **establishing positive relationships** with others.



P6 students working together to promote their class booth at the “Market Place” activity to raise funds to support charity

Through the
school theme

- Our students develop into **individuals with greater self-efficacy**
- They adopt a broader view of life, are balanced in their approach and create a positive impact in their family, the school, the community, the nation and the world



A SKGian facilitating a children's art session at the National Museum

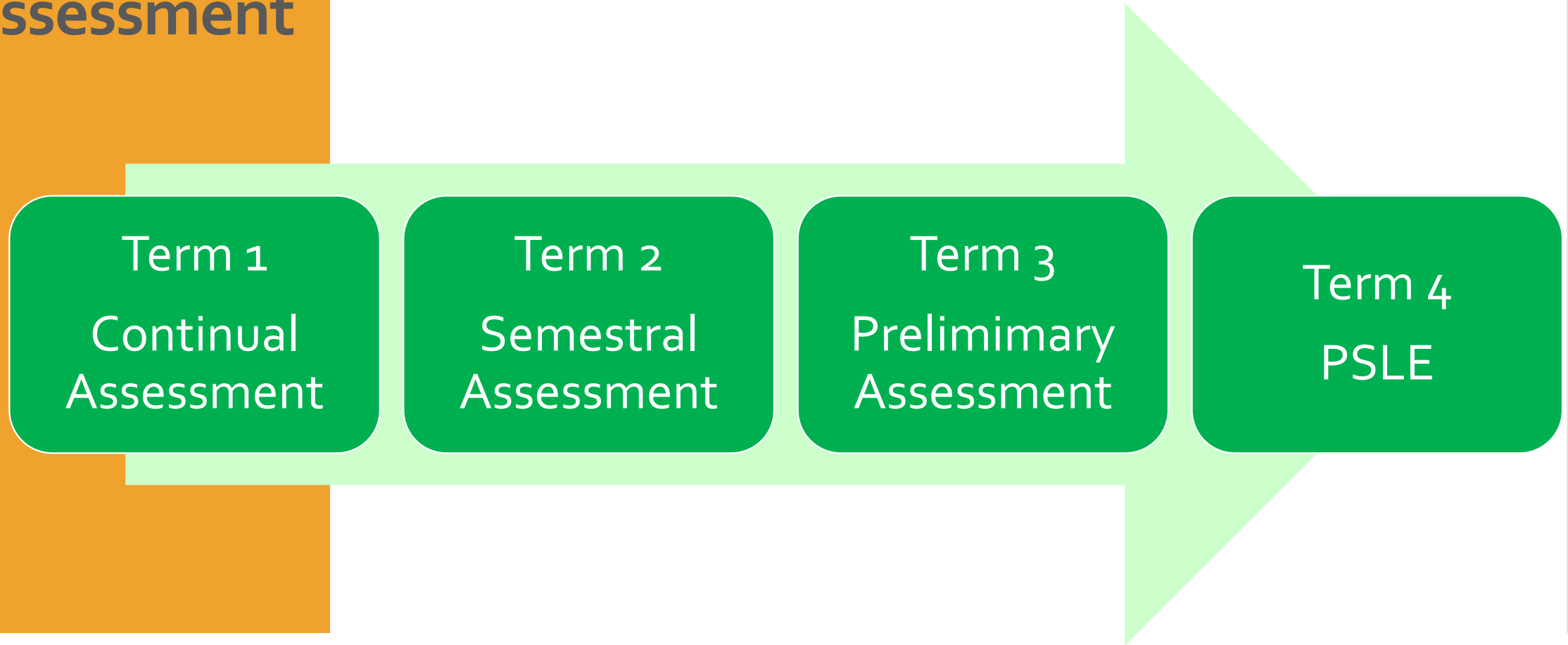
Important roles of parents

Parents are important partners of the school in our endeavour to develop each student holistically to become a **wholesome individual of good character** and **a responsible citizen**, and a **lifelong learner**.



Classroom celebration of National Day in the Bicentennial Year

Roadmap 2020 P6 Assessment



Important Dates

PSLE Dates

Activity	Date / Period
PSLE Registration Dates	9 March (Mon) – 23 Mar (Mon)
PSLE Oral	13 Aug (Thu) – 14 Aug (Fri)
PSLE Listening Comprehension	18 Sep (Fri)
PSLE Written Examination EL/FEL Paper 1 and 2 MA/FMA MT Paper 1 & MT/FMT Paper 2 SC / FSC HMT	1 Oct (Thu) – 7 Oct (Wed)

Post-PSLE Dates

Event	Date / Period
PSLE Marking Exercise	Mon, 19 Oct – Thu, 22 Oct
Release of PSLE results and certificates	25 – 27 Nov
Secondary 1 Posting Exercise	Nov
Release of Secondary School Posting Results	Dec
Report to Secondary School	Dec

We highly encourage parents to ensure that their children are in Singapore during the S1 posting exercise and when reporting to the Secondary school following the release of Secondary School Posting results.

School Assessment Dates

Semestral Assessment (SA)	Date
EL/FEL Oral Examination	27 Apr 2020 (Mon)
MT/FMT Oral Examination	28 Apr 2020 (Tue)
EL/FEL Listening Comprehension EL/FEL Paper 1	4 May 2020 (Mon)
MTL/FMT Listening Comprehension MTL Paper 1	5 May 2020 (Tue)
HMT Paper 1 and 2	8 May 2020 (Fri)
EL /FEL Paper 2	11 May 2020 (Mon)
MA/FMA	12 May 2020 (Tue)
MTL/FMT Paper 2	13 May 2020 (Wed)
SC/FSC	14 May 2020 (Thu)

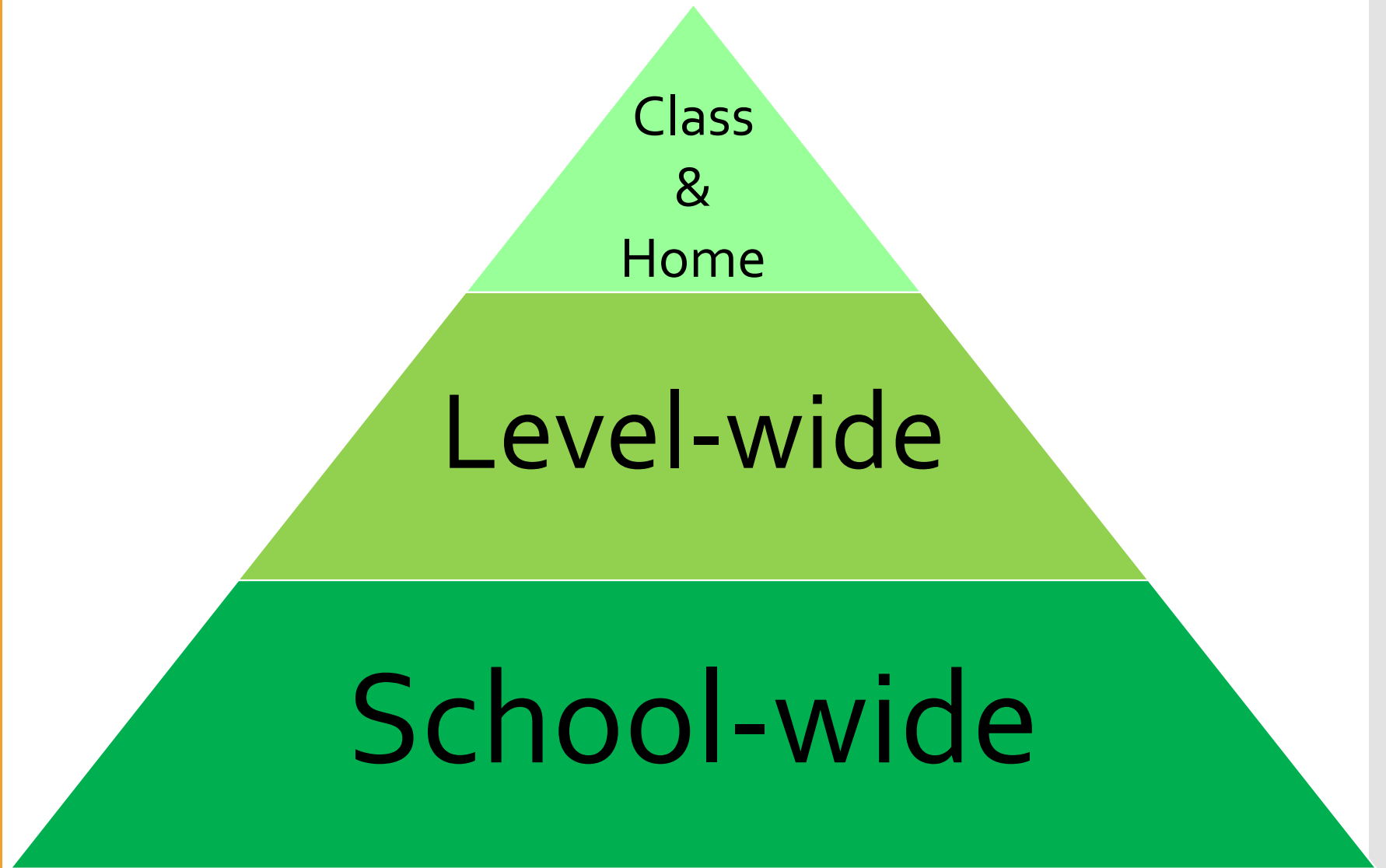
School Assessment Dates

Preliminary Assessment	Date
EL/FEL/MTL/FMT Oral Examination – Day 1	20 Jul 2020 (Mon)
EL/FEL/MTL/FMT Oral Examination – Day 2	21 Jul 2020 (Tue)
EL/FEL/MTL/FMT Listening Comprehension	18 Aug 2020 (Tue)
EL/FEL Paper 1 & 2	20 Aug 2020 (Thu)
MA/FMA	21 Aug 2020 (Fri)
MT Paper 1 and 2 FMT Paper 2	24 Aug 2020 (Mon)
SC/FSC	25 Aug 2020 (Tue)
HMT Paper 1 and 2	26 Aug 2020 (Wed)

Note: The Preliminary Examination will be conducted as close as possible to the actual PSLE.

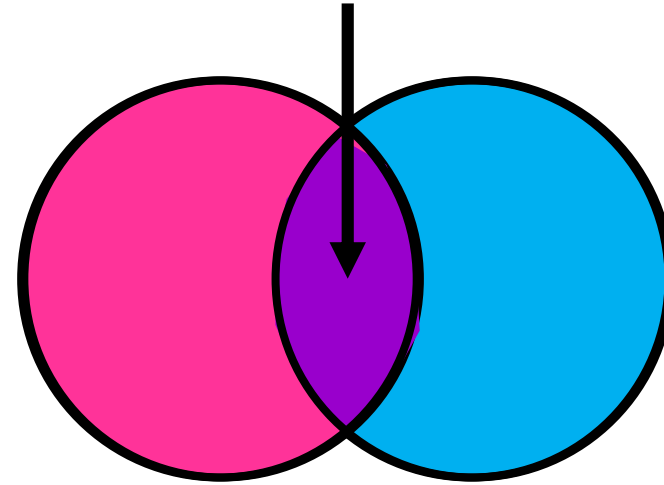
Strategies to Support Your Child

Strategies
(targeted at 3
broad levels)



School-wide Strategies

Our Common interest : **your child, our student**



Preparation for
PSLE

We believe in **working collaboratively** with parents to develop our students **holistically**

Let us **partner each other** as we **support our students** in their PSLE preparation

School-wide Strategies

Regular Communication with parents

SKGian Handbook, School Calendar, School Notifications,
Parent Gateway, School Website & SKGian Connect

Preparation for
PSLE

Sessions	DATE/PERIOD
Meeting parents of selected students	After CA (13 Mar) & After Prelim Exam
Parent-Teacher-Child Conference (For all students)	Fri, 22 May & Mon, 26 May

Preparation for PSLE

School-wide Strategies

Developing Social Emotional (SE) Competencies

Numerous researches highlighted that students' school holistic achievements are closely related to their social emotional competencies.

The school theme for 2020 "Be the best that I can be" highlights the importance of SKGians acquiring the social emotional competencies:

Self
Awareness

Self
Management

Social
Awareness

Relationship
Management

Responsible
Decision-
making

Preparation for PSLE

School-wide Strategies

Developing Social Emotional (SE) Competencies

How the “Big 5” in Social Emotional Learning Impact Life Outcomes

August 2018

*...the teaching of social and emotional skills throughout a child's school career...not only impact their lives in the short term, including **ability to respond in a healthy manner to difficult life situations or stress**, but will also play a large role in their success later in life.*

<https://learnwelleducation.com/how-the-big-5-in-social-emotional-learning-impact-life-outcomes/>

Preparation for PSLE

School-wide Strategies

Developing Social Emotional (SE) Competencies

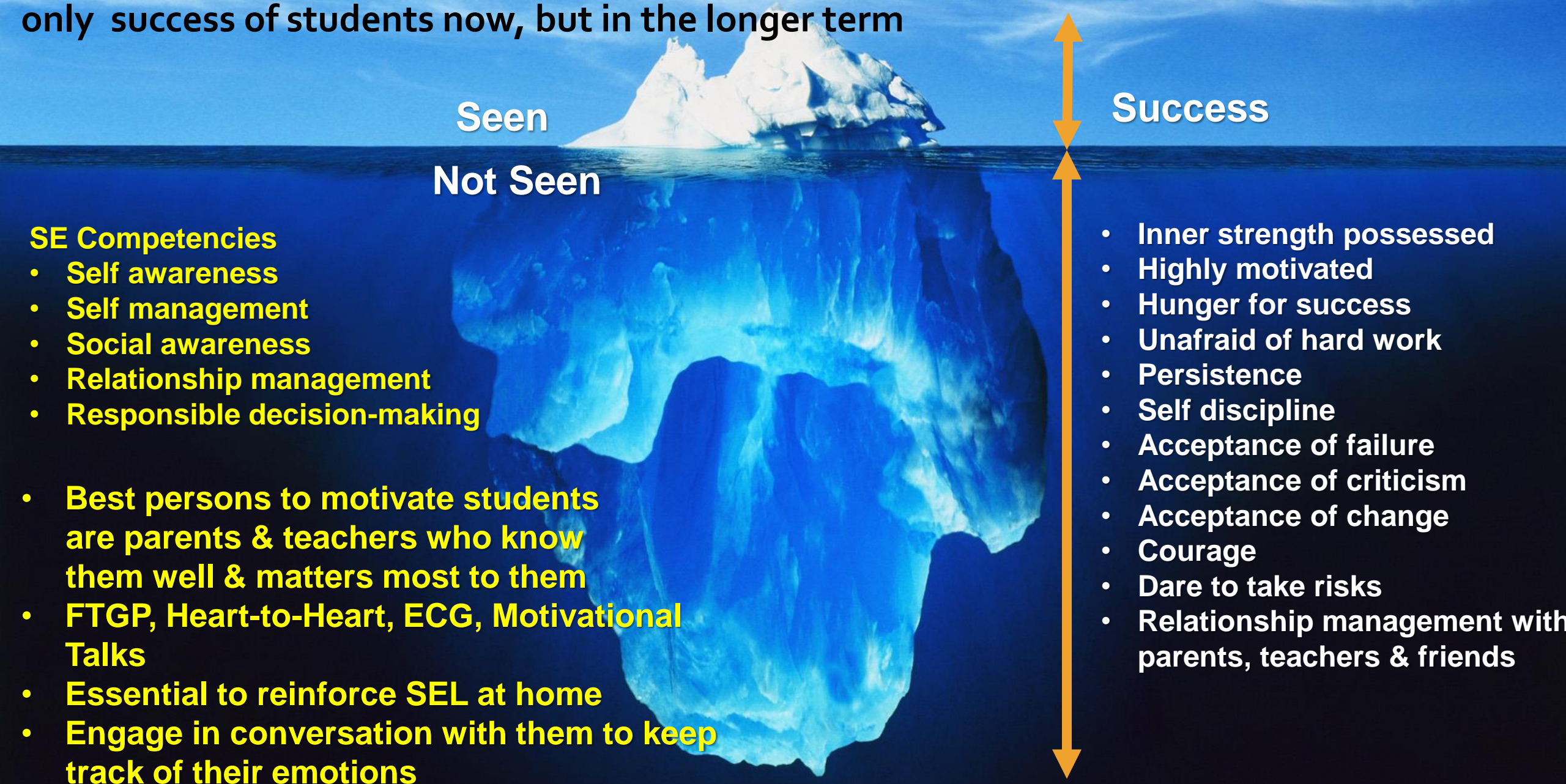
The Future of Education Depends on Social Emotional Learning: Here's Why

June 2018

".... social and emotional learning (SEL) is critical to a child's development, as it directly correlates to **success and happiness as an adult**...Combining...with academic development creates high-quality learning experiences and environments that **empower students to be more effective contributors** in their classrooms today and **in their workplaces and communities tomorrow**"

<https://www.edsurge.com/news/2018-06-04-the-future-of-education-depends-on-social-emotional-learning-here-s-why>

Graphic to illustrate the importance of Social Emotional Competencies in determining not only success of students now, but in the longer term



Preparation for PSLE

School/Level wide Strategies

Target Setting

- Guide students in setting targets for all subjects
- Help students set direction and focus to **realise their academic potential to the fullest**
- Teachers will work with the students to set realistic targets.
- Targets are not meant to stress the students but to help them **keep focus**.
- This will be done also during the **Heart-to-Heart** sessions, which is a one to one session which Form Teacher will have with each student.
- **This will be an on-going exercise for the whole year as the students progress in their learning.**

Preparation for PSLE

School/Level-wide Strategies

Education Career Guidance (ECG)

Education and Career Guidance (ECG) is about equipping students with the necessary **knowledge**, **skills** and **values** to make informed decisions at each key education stage for **successful transition** from school to work, and hence to manage their career pathways and **lifelong learning** throughout their lives.



Parents are encouraged to explore the **MySkillsFuture Portal** with your child at the following link:

<https://www.myskillsfuture.sg/content/student/en/primary.html>

Preparation for PSLE

Level-wide Strategies

Emotional Support to Boost Confidence

Emotional Support by Care Team

- Form Teachers
- Subject Teachers
- School-based Counsellors
- Student Development Team (inclusive of School Leaders and Year Heads)

Motivational Talks

- School Leaders
- HODs
- Year Heads

Notes of Encouragement from other levels before PSLE

Preparation for PSLE

Level/Class Strategies

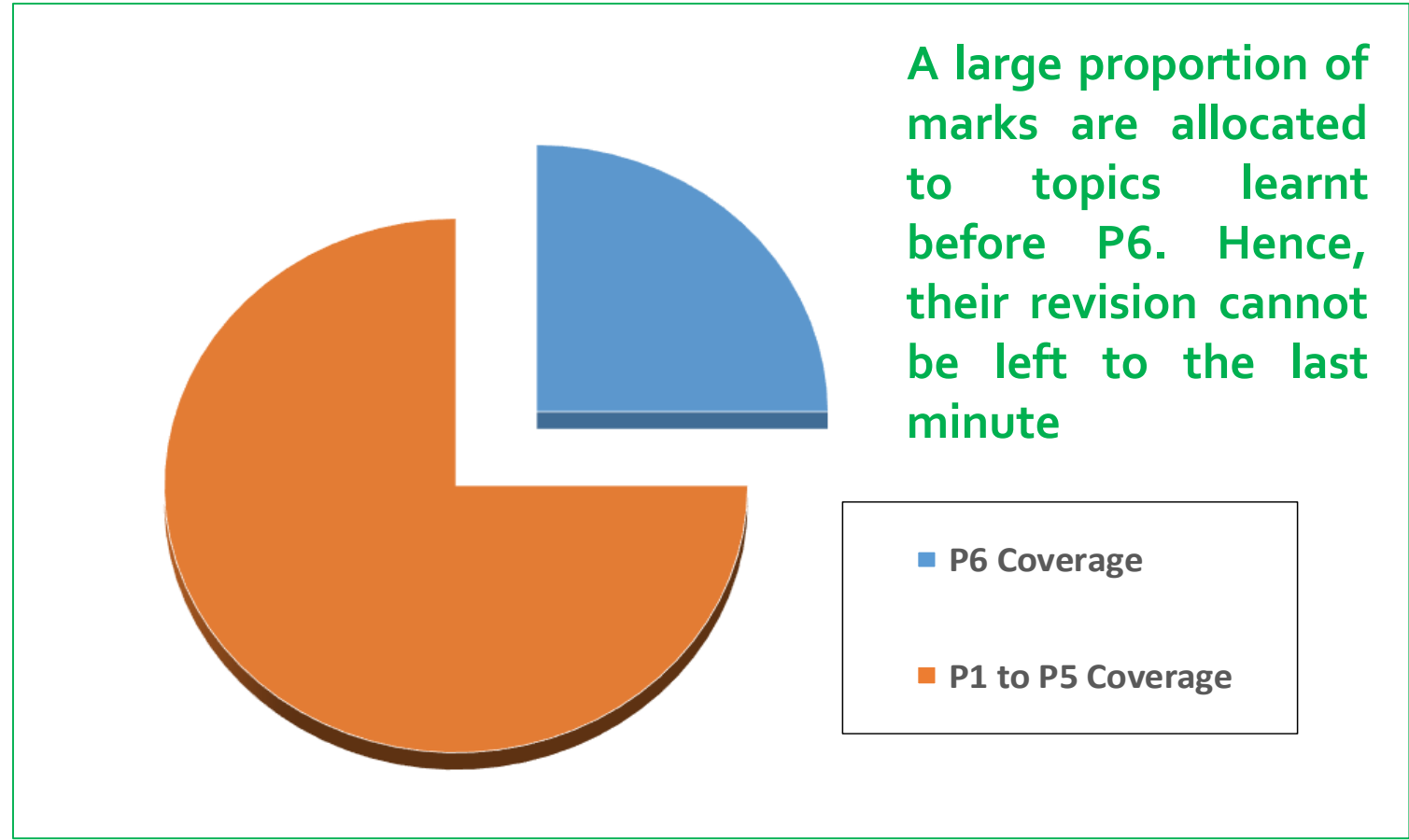
Emotional Support to Boost Confidence

1. Developing a **Growth Mindset**
2. Developing **self-management skills**
 - Completion of homework
 - Have an afterschool study plan
 - Have a weekend and holiday study plan
3. Display **ICAR²E values** in school as they make use of the enhanced curriculum time on Thursdays to revise their work

Preparation for PSLE

Level/Class Strategies

Concurrent Revision of Previous Year's Work



Preparation for PSLE

Level/Class Strategies

Targeted Revision and Remediation Programme
(to strengthen conceptual understanding, skills, strategies)

Programme	Timeline
Remediation Programme (for selected students)	Starting from T1 Week 5
Concurrent revision of pre-P6 work	Sem 1
All subjects revision programme	Term 3 till PSLE

Note: Parents to be aware of the schedule and ensure that students attend the programme.

Preparation for PSLE

Level/Class Strategies

School Holidays Revision / Remediation Programmes

School holidays	Date	Students Involved
March Holidays	16 Mar (Mon) – 17 Mar (Tue)	Selected students
June holidays	1 Jun (Mon) – 3 Jun (Wed)	Selected students
	24 Jun (Wed) – 28 Jun (Fri)	All students
September Holidays	9 Sep (Wed) – 11 Sep (Fri)	All students

Note: Parents to be aware of the schedule and ensure that students attend the programme.

Preparation Journey for PSLE

Developing the Growth Mindset

Sharing on P6 Preparation (Term 1)

Target Setting

Focused revision programme

Concurrent revision of pre-P6 work

Remediation programme during March holidays

March holidays homework

Focused revision/remediation programme for all subjects

Motivational Talks by YH and SLs

Remediation & revision programme during June holidays

June holidays homework

Focused revision programme for all subjects

Prep Talks by YH and SLs

Revision programme during Sep holidays

Focused Revision Programme

Well-prepared and well support P6 students



P6 students



P6 students and Parents



PTCC for selected parents after CA



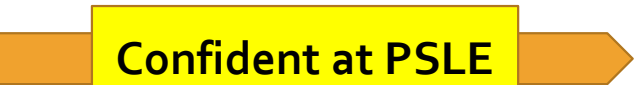
SA Results
PTCC for all parents



Readiness Check



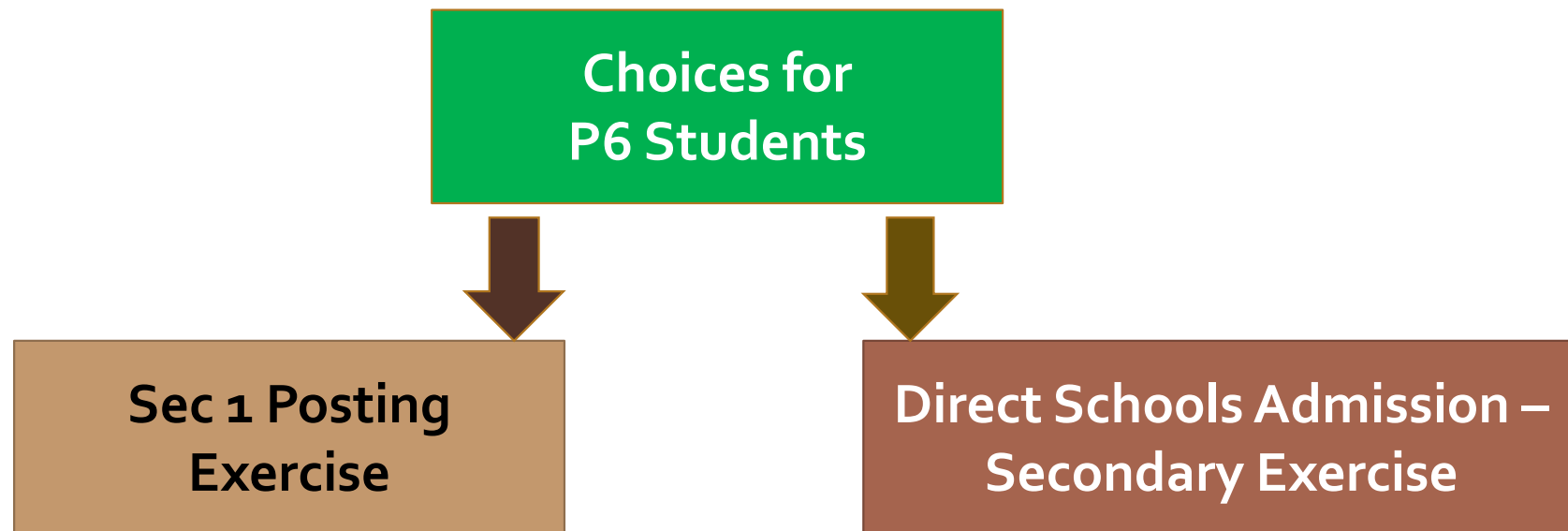
Prelim Results



Success at PSLE

Progression to Secondary Schools

Progression to Secondary Schools



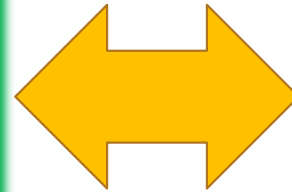
S1 Posting Exercise

- All students who pass the PSLE are eligible for S1 Posting Exercise.
- Conducted after the release of the PSLE results
- Students are posted to secondary schools based on merit according to three criteria:
 - Student's PSLE results
 - Choice of schools
 - Vacancies available in the schools
- Information on secondary schools will be provided to all students prior to the release of the PSLE results.

Promotes Holistic Education

Direct School Admission (DSA-SEC)

Allows students to gain **direct** entry to certain secondary schools based on their **talent** in **sports, CCAs and specific academic areas**



Allow **participating secondary schools** to **select** some **P6 students** for admission to Secondary 1 based on :

- **talents**
- **potential**
- **achievement**

Direct School Admission (DSA-SEC)

- Introduced by the Ministry of Education in 2004
- Seeks to **promote holistic education** and provide students an opportunity to demonstrate a more diverse range of achievements and talents in seeking admission to a secondary school
- An admission exercise to allow participating secondary schools to select some Primary Six (P6) students for admission to Secondary One. The selection will be based on their achievements and talents before the PSLE results are released.
- Takes place from May to Nov (tentative) each year

Centralised DSA-SEC Application Portal

Direct School Admission (DSA)

- Make applications via a common online portal from the 2020 DSA-Sec Exercise using one of the parents' Singpass login.
- Applicants only need to **fill in one online form** to apply to multiple schools.
- Students interested to apply to **Singapore School of the Arts (SOTA)** or **Singapore Sports School (SSP)** will continue to **apply directly to the schools** because of their unique admission requirements.
- Details such as student's Primary 5 and Primary 6 academic results, Co-curricular Activities (CCA), school-based achievements/awards will be **automatically shared** with the schools that the student applies to.

No certificates, transcripts or testimonials will be required from the students.

Direct School Admission (DSA-SEC)

Type of Secondary School	% of Places offered
Specialised schools such as Singapore School of the Arts (SOTA) and Singapore Sports School (SSP)	100%
All other Secondary Schools (for non-Integrated Programmes)	20%

Direct School Admission (DSA-SEC)

Tentative Time Frame

Jan - Jun

- Explore schools
- Application

Jul - Aug

- Attend interviews, audition and trails

Oct – Nov

- Select preferred schools

Nov

- Receive school allocation results together with PSLE results

Choosing your DSA-Sec school

Direct School Admission (DSA-SEC)

- Learn more about DSA schools, their programmes and selection criteria through the school website.
- Consider your child's strengths
- Encourage your child to develop his/her talents through the school's existing programmes (eg CCA, Learn for Life Programme)
- Ensure your child remains committed to the talent development programmes (eg regular attendance, good performance)
- Consider the location of the school and transportation matters
- Choose a DSA school that best caters to your child

Support provided by SKGPS

Direct School Admission (DSA-SEC)

- Dissemination of information on DSA, Talent Academy, Open House, etc.
- Development Programmes (eg CCA, C³ Programme, Art Mentorship, Junior Sports Academy)
- Building of portfolios
- FAS pupils may seek financial assistance from school for application fees or administration fees required for DSA selection test, trials or camps.

Outcomes of DSA Application

Direct School Admission (DSA-SEC)

- DSA School will inform applicants of application outcome:
 - Confirmed Offer
 - Waiting List
 - Unsuccessful
- Successful applicants will exercise their preference.

Direct School Admission (DSA-SEC)

Important Things to Note

- Your child's PSLE score still matters. Students offered placement in a DSA-Sec school still need a PSLE score that qualifies them for the course offered by the school.
- Successful DSA candidates will **not** be allowed to make any **school option** in the centralised S1-Sec Posting Exercise.
- Unsuccessful DSA candidates will have to participate the S1-Sec Posting Exercise after receiving their PSLE results.

Information on the 2020 DSA-Sec will be available from April 2020.

You may find out more about the DSA-SEC at the following link:

<https://beta.moe.gov.sg/dsa/>



Challenges Common to P6 Students

Challenges common to P6 Students

- **higher academic demands** along with cognitive development (*egs. content coverage, conceptual understanding, duration of exam papers & questions of higher order thinking*)
- matters relating to personal **physiological changes**
- matters relating to their **relationship with peers**

Overcoming the Challenges

Students need to:

- stay **confident** in the face of challenges at P6
- **be disciplined** and stay focused over a longer time span
- **Have social emotional competencies to deal with the challenges**

Challenges common to P6 Students

- Excessive time spent on smart devices for online activities

Children here spend more time online than global average *The Straits Time, 7 Feb 2018*

Children in Singapore spend more time online compared with those in other countries... they are glued to their screens for 35 hours a week - three hours more than the global average.

<https://www.straitstimes.com/tech/children-here-spend-more-time-online-than-global-average-poll>

Smartphone and Internet addiction can alter teenage brain chemistry *CNA, 4 Dec 2017*

Internet- and smartphone-addicted teenagers may have chemical imbalances in the brain that are similar to people experiencing depression and anxiety...

<https://www.channelnewsasia.com/news/health/smartphone-and-internet-addiction-can-alter-teenage-brain-9467498>

Reinforcing Cyber Wellness at Home

Overcoming the Challenges



**MODEL & GUIDE
RESPECTFUL, RESPONSIBLE
& HEALTHY MEDIA USE**



**TALK OPENLY WITH YOUR
CHILD ON HIS MEDIA USE**



**SET PARENTAL CONTROLS
AND FAMILY GUIDELINES**



**TEACH CHILD TO BE CAREFUL
WITH DIGITAL FOOTPRINTS**

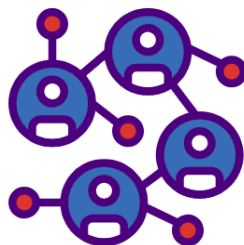
Overcoming the Challenges

Reinforcing Cyber Wellness at Home



Learn from each other, grow together

Learn about what your children like to do online and let them share with you about tech use. Highlight how to use technology wisely and responsibly.



Make it social, engage together

Turn online activities into time for bonding (e.g. co-view an online video, discuss an online blog post, play an online game together).



Manage digital diet and digital nutrition

Guide your children to monitor their time spent online (digital diet) and make better, 'healthy' choices about their activities online (digital nutrition).



Get involved or be left out

Don't be too critical of your children's online exploration. Get involved so that you are not the last one to know.

Strategies to support your child at home

Supporting your child's transition through

Primary 5/6

Build a caring home environment to nurture the social and emotional skills of your child using these S.A.F.E. tips.

SUPPORT

- **Encourage** your child to **talk to a trusted adult** for guidance.
E.g. Family members, school counsellors and teachers.
- **Help** your child **understand decisions made and actions** taken. **Share the reasons** for them.
- **Keep rules short and realistic.**
E.g. No handphones allowed during meal times.

AFFIRM

- **Recognise** his/her demonstration of **good values or social skills.**
E.g. Respect or good time-management.
- **Praise** your child's **efforts regularly.**
Only scolding him/her without providing any justified praise at other times can be demoralizing.

EMPATHISE

- **Show** that you **understand** your child's **concerns.**
Be flexible in guiding your child when necessary.
E.g. Vary your voice tone when you talk to him/her at different times and circumstances.
- **Teach with less talk and more role-modelling.** Children learn a lot by simply watching.

FAMILIARISE

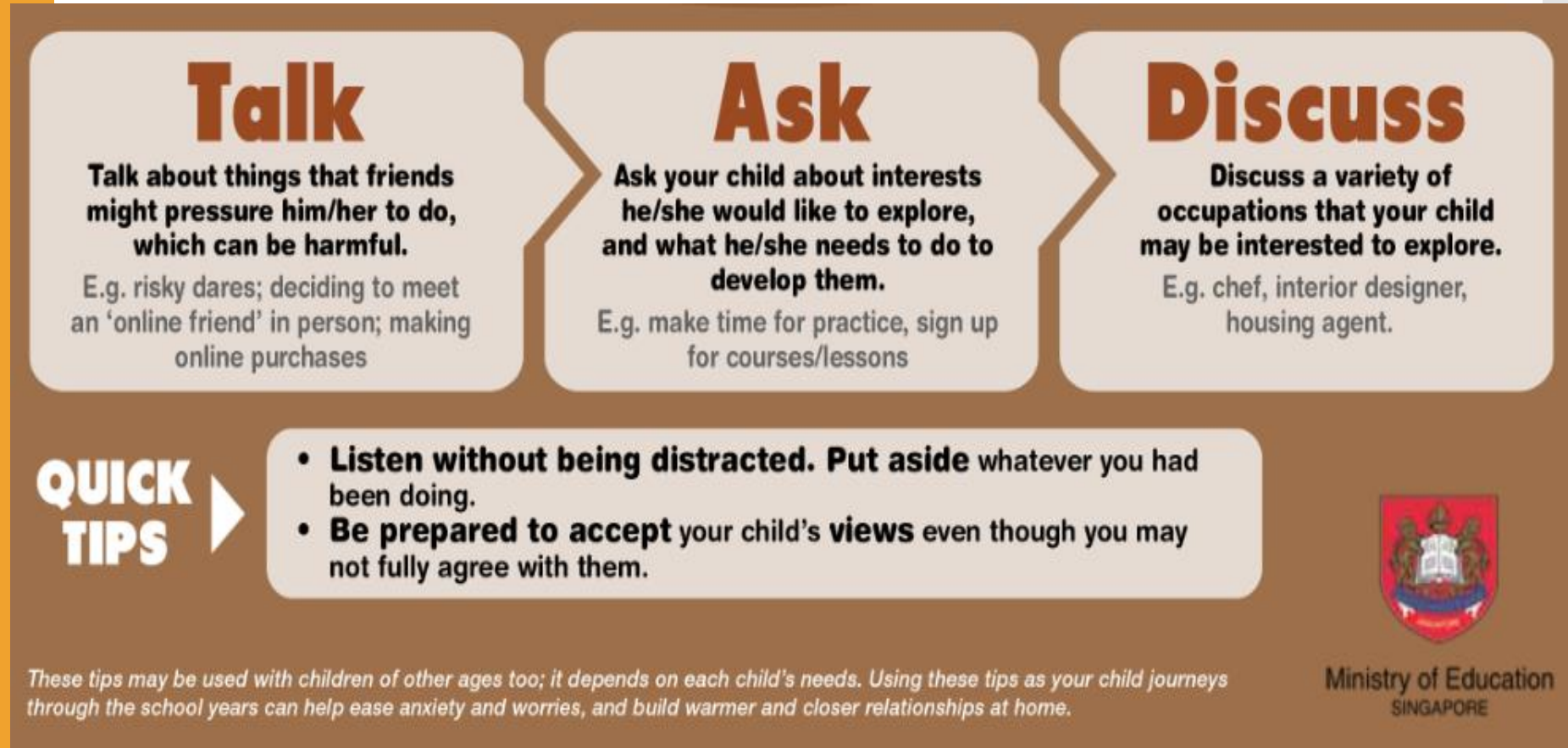
- **Find out** what Primary 5 and 6 is like for students these days. **Moderate your expectations** according to your **child's own strengths and development.**
- **Share information on** physical changes during **puberty**; include the range of emotions that may accompany it.



<https://www.moe.gov.sg/docs/default-source/document/education/programmes/social-emotional-learning/sel-resources-for-parents/transition-resources/gb-transitions.pdf>

Supportive
Home for your
child using
S.A.F.E tips

Spend time chatting using T.A.D



<https://www.moe.gov.sg/docs/default-source/document/education/programmes/social-emotional-learning/sel-resources-for-parents/transition-resources/gb-transitions.pdf>

We look
forward to
your
partnership



And the school wishes
every P6 student success at PSLE 2020!