



SENGKANG GREEN
Primary School

PSLE Result Release
21 November 2019

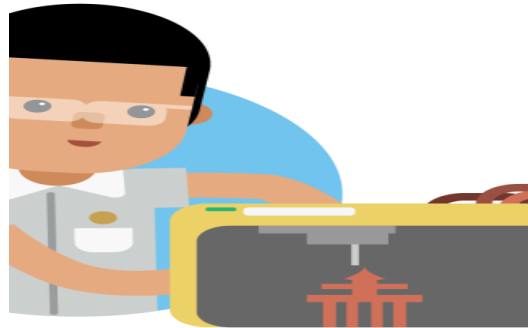
WHAT DO OUR CHILDREN NEED TO THRIVE IN THE FUTURE?



STRONG FOUNDATION

For example:

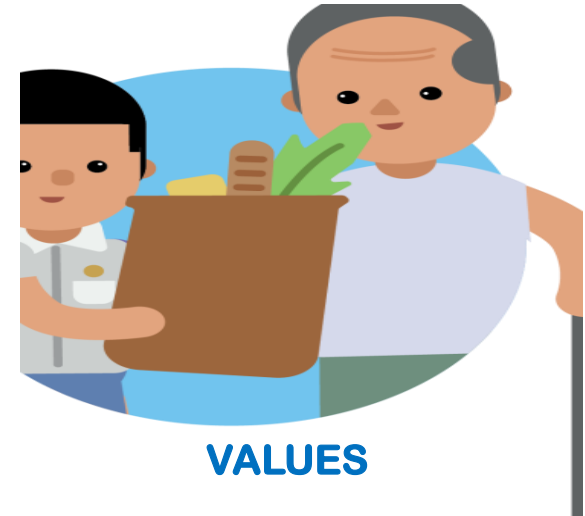
- Literacy (Bilingualism)
- Numeracy
- Social-emotional core



21ST CENTURY COMPETENCIES

For example:

- Global awareness
- Inventive thinking
- Communication



VALUES

For example:

- Resilience
- Integrity
- Care
- Sengkang Green Values

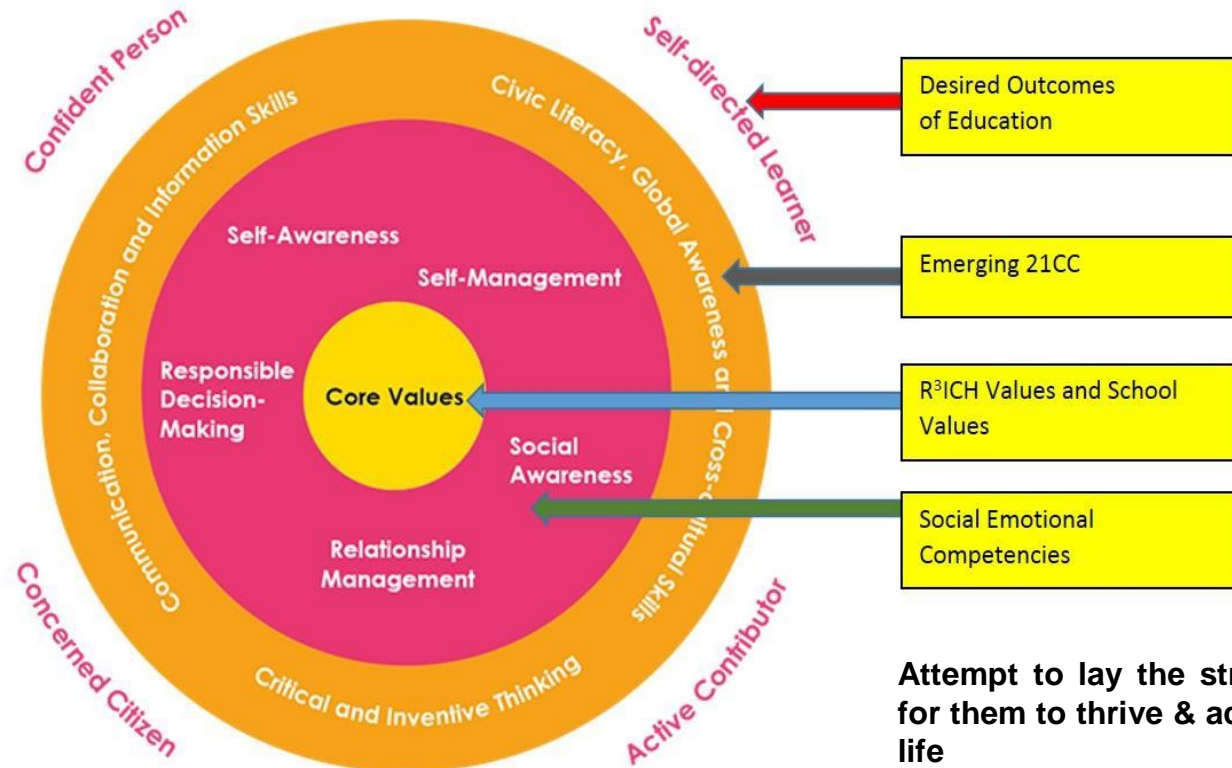
We want our children to:

- Develop different aspects of their **character**.
- Know that there are **different kinds of talents**, academic and non-academic.
- Know that **grades are just a part of their story**.
- Understand that **there are many paths to a fulfilling life**.



21 Century Competencies

Essential Learning in students that bound our design of learning



Attempt to lay the strong foundations for them to thrive & achieve success in life

Key Directions for Learning



- A Holistic Approach to Educating the Whole Child
- Values/Character education is a key to success in learning whether in the academics or other domains
- Design of Learning is key



Values are key in educating a child

- How values bring about academic achievement (E.g. resilience to persevere at difficult problems, mindset of excellence)
- Encourage and affirm progress, not one-time results
- Promote meaningful learning (vs rote learning as a main mode of learning)
- School and parents need to take a long-term view of education



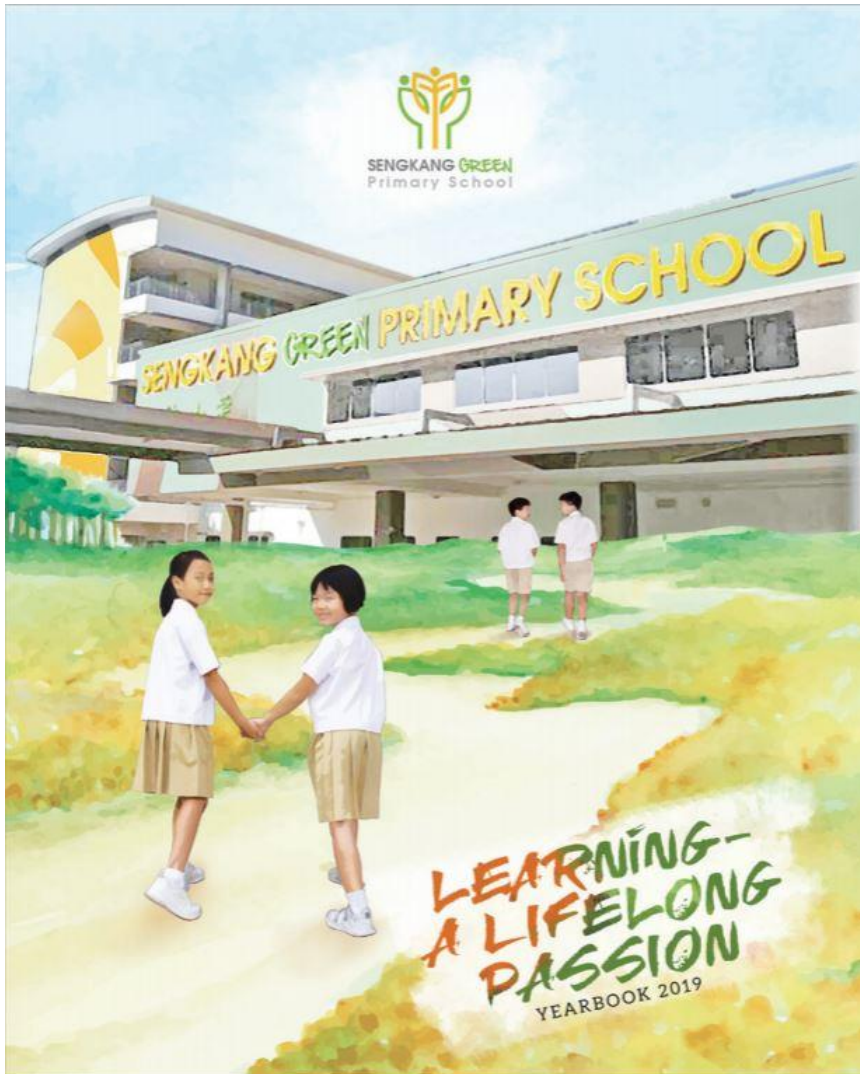
SENGKANG GREEN
Primary School

十年树木、百年树人

Education is a lifelong journey

A gift from your alma mater

Our Inaugural SKGian Yearbook



Celebration of Success @ P6 Graduation

Appreciation to the school and partners



Celebration of Success @ P6 Graduation

Thank you and farewell to the parents supporting the school



Celebration of Success @ P6 Graduation

Presenting students' talents



Celebration of Success @ P6 Graduation

Presenting students' talents



The PSLE is a milestone in the journey of lifelong learning for each SKGian

Upon receiving the results, it is important for each of one you to reflect on what are the habits, attitudes and mindset that enable you to successfully reach this milestone so that these become useful in your secondary level education and beyond!

*“To help our students meet the challenges of an uncertain, fluid future, we need to usher in a new phase of change. I call this phase of change **Learn for Life**.*



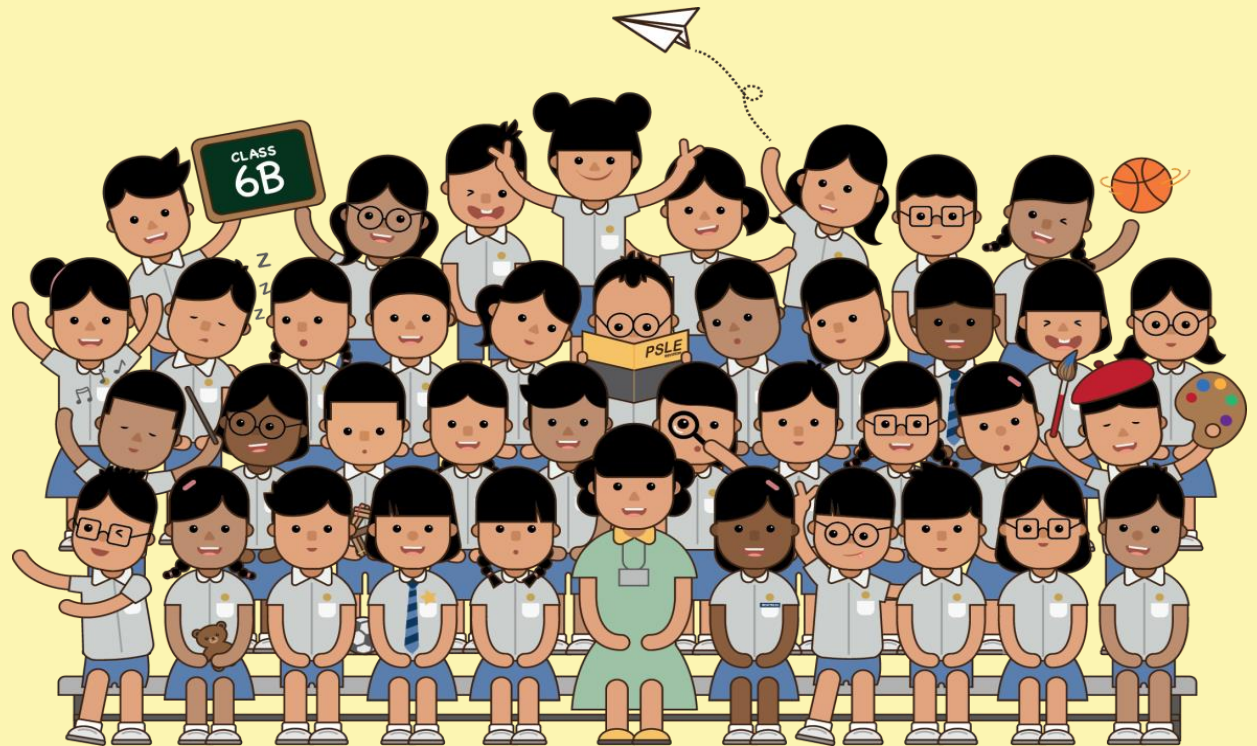
*Learn for Life is a **value**, an **attitude**, and a **skill** that our students need to possess, and is fundamental in ensuring that education remains an uplifting force in society...”*

Minister Ong Ye Kung
MOE Work Plan Seminar 2018

Thank your parents, teachers
and all other people who have
contributed to your
achievement at PSLE!

CHOOSING YOUR SECONDARY SCHOOL

(For Release of PSLE Results)



The PSLE is not the destination. It is part of your education journey.

PSLE is **part of the process of growing and learning.**

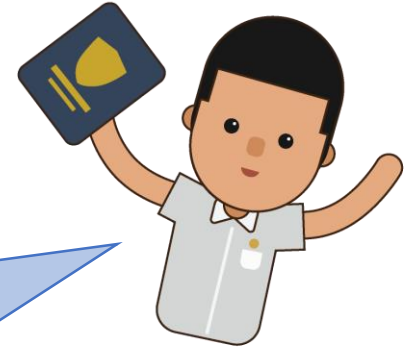


As you await the results, there are 3 possibilities:

- (1) You are happy the results meet your expectations,
- (2) You are elated that your results exceed your expectations, or
- (3) You are worried because the results fall short of your expectations.

No matter where they fall under, you must remember that your PSLE score does not determine how successful you will be in the future.

Managing Your Emotions and Making Your Decisions



When you receive your results, you will feel strong emotions. Managing these emotions well will allow you to stay calm and make rational decisions.

STOP

Deeply inhale and exhale slowly, and relax your muscles. Count slowly from 1 to 10 while still breathing deeply. Find a word to describe how you feel.

THINK

Think through the different options that are available for you. Identify trusted adults whom you can talk to for guidance and support.

DO

Approach a trusted adult and seek his/her help. Have a conversation with this person about what would be best for you. Make a decision and take action based on your options.

Choosing a secondary school

The journey ahead offers a lot of opportunities and pathways that would best suit your learning pace and strengths.

Knowing your own strengths and interests will help you choose a secondary school. It is important to choose a school and course that suits the way you learn.

Remember that the PSLE helps to assess your learning pace and needs, so that you can go to a secondary school and a course **suited to your learning needs**.



Who am I? Who do I want to be?

- The more we know about ourselves, the better our choices will be
 - What do I enjoy doing?
 - What am I good at?
 - How would they affect my choice of secondary school?

**Everyone is
unique**

To help know more about yourself, do talk to your parents, teachers, and friends, and tell them about:

- *What are your dreams and goals?*
- *What do you enjoy doing and are good at?*
- *Who do you want to be in the future? Why?*



Where do I want to go? Why?

- There are **many options for you to explore**
 - What are the subjects, CCA or school programmes that can **nurture your interests and strengths?**
 - **Which schools** and what are the **types of school** that have such offerings?
 - Which secondary school would be **most suited for your interests and strengths?**



**Everyone's
education journey
is different**



What other factors do I need to consider?

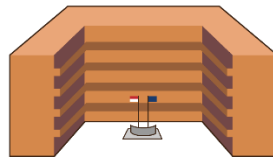
School Values

School Culture & Learning Environment

Location & Travel Distance

Schools offering Tamil/HMTL

Alma Mater of Parents or Siblings





Subject-based Banding

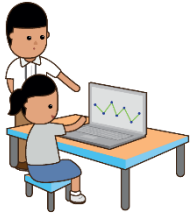
Do you know that if you are in the N(A) or N(T) course, you can take some subjects at Express or N(A) levels?

This allows you to stretch yourself in the subjects that you are good at!

No matter how you fare, **there will always be choices for you**, that can meet your learning needs and develop your interests and strengths



How can I get there?



- **There are many resources available** to help you as you take the next step in your education journey
 - How can I use available resources to help me as I think about my choice?
 - What are the learning opportunities available to me?
- **Talk to your parents, teachers and counsellors** if you need more support.



It's important to think about these questions to make informed decisions!



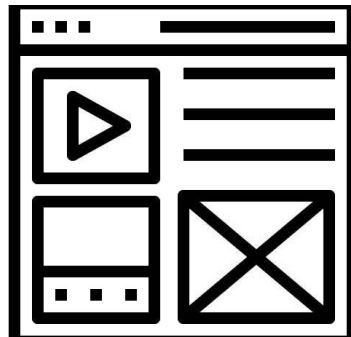
How can I find out more about secondary schools?

To find out more about secondary schools and their programmes, you can



**Attend Open House
of individual schools**

<https://tinyurl.com/SecOpenHouse2019>



**Explore the individual
school websites**



**Education
Guide**



**Access the MySkillsFuture
Student Portal**

Explore schools in the *Education Guide* feature

<https://www.myskillsfuture.sg/content/student/en/primary/education-guide/explore-school.html>



What's Next – A quick guide for decision-making



[www.moe.gov.sg/
microsites/whats-
next-after-PSLE](http://www.moe.gov.sg/microsites/whats-next-after-PSLE)

In Summary



4 Step guide to choosing a secondary school

**Seek guidance from a trusted adult. Focus positively on your next step forward.
Consider your strengths, interests, and goals.**



**Make use of the available resources to identify some schools that are suitable
for you.**



**Find out more about different secondary schools' strengths, programmes,
CCAs, cultures, and niche areas through schools' open houses or the
MySkillsFuture.sg student portal.**



**Decide which secondary school would best help you grow your strengths and
interests.**



Resources and Tips for Parents

How to support your child in ECG



Success can be personal to your child...

- Do celebrate your child's efforts.
- Do pay attention to your child's socio-emotional needs. Acknowledge your child's emotions. Help them manage their expectations and emotions, especially if they have overly high expectations or negative emotions.
- Do engage your child in conversations on their education interests and support them in pursuing their diverse aspirations. Remind your child that the PSLE score does not determine how successful he/she will be in the future
- Do work in partnership with your child's teachers to identify, understand, and encourage your child's strengths and interests



Providing social emotional support

- Look out for out-of-character behaviours in your child, e.g. deliberate social withdrawal, sudden changes in appearance or temperamental changes.
- Should common signs of stress persists, parents should seek help and advice from a health professional.
- You may wish to inform your child's new school on his / her well-being, so that appropriate support can be given, e.g. monitoring by teacher or counsellor.

D	Displaying out-of-character behaviour
I	Injuries that are unexplained (including cuts, bruises or burns)
S	Sudden changes in appearance, interests or habits (including eating or sleeping)
T	Temperament changes (irritable, agitated, moody, stressed or anxious)
R	Rebellious/ aggressive behaviour
E	Extended absence/ deliberate social withdrawal
S	Struggling to pay attention/ increased lethargy
S	Sending/ posting moody or morbid messages (including expressions of death)

Image source: <https://go.gov.sg/distress-signals>

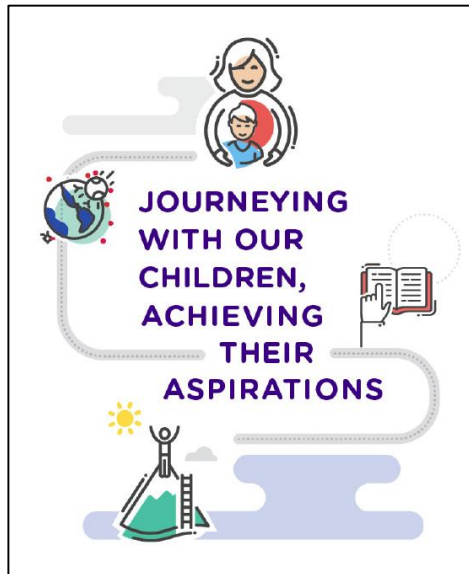


Resources to provide social emotional support

- i. Resilience Boosters: <https://tinyurl.com/resil-boosters>
- ii. Raising Confident Children: <https://tinyurl.com/conf-children>
- iii. Supporting Your Child Through Transitions: <https://tinyurl.com/support-in-transitions>
- iv. How Do You Praise?: <https://tinyurl.com/praise-well>
- v. Gratitude: <https://tinyurl.com/gratitude-parents>
- vi. “[Is your child too stressed?](#)” infographic
- vii. “[Setting realistic expectations](#)” infographic



Providing education and career guidance



www.moe.gov.sg/ECG-parent-guide

7 Points to Note When Supporting Your Children's Education and Career Journey



For more information on post-PSLE options, visit <https://beta.moe.gov.sg/secondary/>



A Singapore Government Agency Website

Ministry of Education SINGAPORE Back to MOE website

Contact Feedback FAQ

Search

P6 students

Secondary School

Learn more about the transition from Primary to Secondary education.

DIRECT SCHOOL ADMISSIONS (DSA)

WHAT'S ON

3 Oct – 22 Nov
[SI: Explore school choices](#)

29 Oct – 2 Nov
[DSA-Sec: Time to submit preferred schools online](#)

22 Nov – 26 Nov
[DSA-Sec: School fees released \(Tentative\)](#)

Ask Jamie @ MOE
Ask about P1, S1, JAE, MK, DSA, RS, PSEA, School Fees, SCC



Help your child navigate the information on <https://go.gov.sg/myskillsfutureportal>

Guide your child and help them find information they need to make a considered decision. Help your child think through his/her options by tapping on the information provided on the MySkillsFuture student portal.



For More Information

- Visit www.moe.gov.sg
- Contact MOE Customer Service
 - www.moe.gov.sg/contact



Ministry of Education
SINGAPORE

Important dates to note:

S1 Posting Exercise

Submission Mode	Submission Period
Via S1 Internet System (S1-IS)	21 to 27 November 2019 (including weekend). S1-IS is accessible 24-hour starting from 11am on 21 November 2019 until 3pm on 27 November 2019.
Through Primary School	Submission starts from 11am to 3pm on 21 November 2019; and 9am to 3pm from 22 to 27 November 2018, excluding weekend.

Important dates to note:

S1 Posting Exercise (20 December 2019)

- Parents and students will be able to check the secondary school posting results through :
 - Short Messaging System (SMS) via applicants' local mobile number (if provided by applicants during the school choice submission period)
 - b. S1-IS (From 9am on 20 December 2019)
(<https://www.moe.gov.sg/admissions/secondary-one-posting-exercise/results>)
 - At Sengkang Green Primary School

Important dates to note:

Reporting to Secondary Schools (23 December 2019)

- **report to the posted secondary schools on 23 December 2019 at 8.30am.**

Thank you

